

Notices to Mariners, SWEDEN Swedish Maritime Administration



Areas in Swedish Notices to Mariners



SJÖFARTSVERKET

Editorial office
Swedish Maritime Administration
Ufs
601 78 NORRKÖPING
Sweden
tel: 0771 630 605
e-mail: ufs@sjofartsverket.se
Publisher:
Hydrographer Patrik Wiberg

ANNOUNCEMENTS

No Announcements in this booklet.

NOTICES

Bay of Bothnia

* 14245 (T)

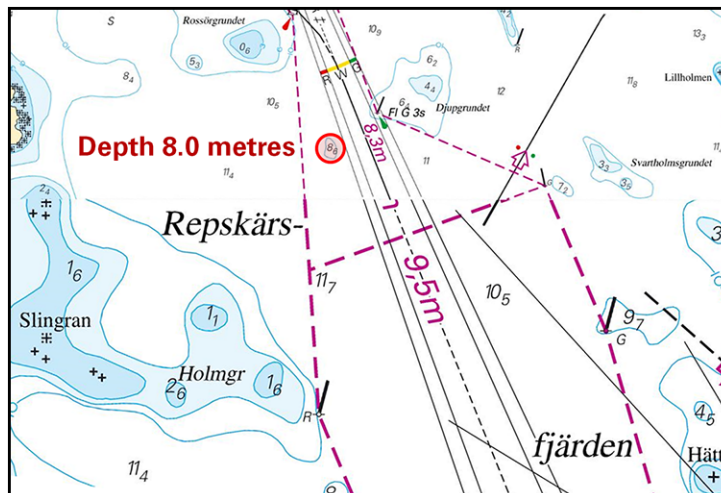
Chart: 4101, 412

Sweden. Bay of Bothnia. Fairway to Karlsborg. Depth less than charted.

A less depth than what is currently charted has been found during during a bar sweep.

less depth than charted => depth 8.0 m	65-45,619N	023-19,170E
----------------------------------------	------------	-------------

Bsp Bottenviken 2018/s10, s68



Fairway to Karlsborg

Sjöfartsverket. Publ. 21 augusti 2019

Sea of Åland and Archipelago Sea

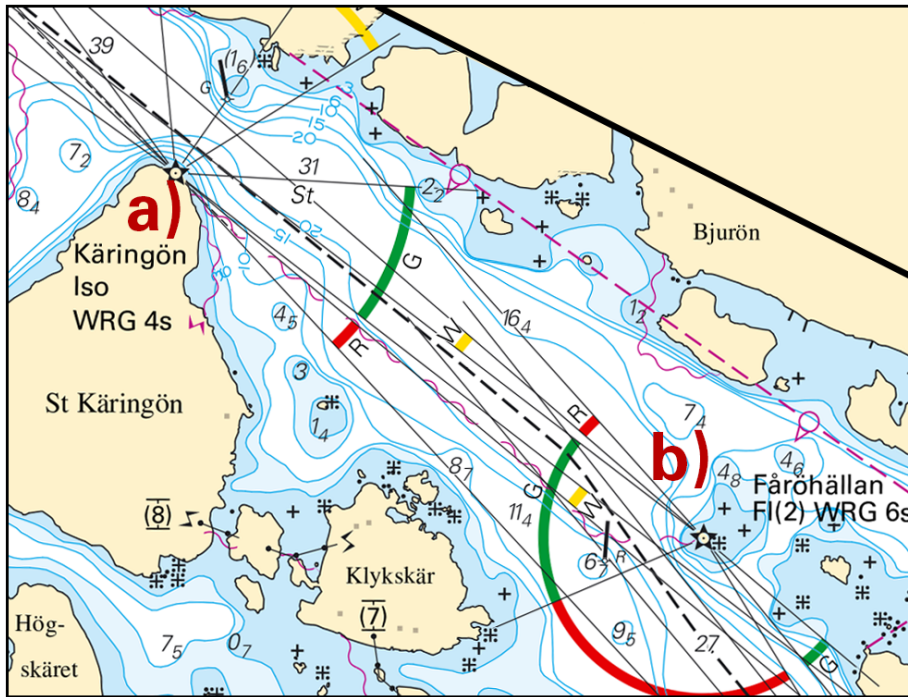
* 14236

Chart: 536

Sweden. Sea of Åland and Archipelago Sea. SE of Öregrund. N Kåringön - Fåröhallan. Disused submarine power cable.

Amend	submarine power cable between a) - b) as shown	a)	60-18,220N	018-32,143E	submarine cable disused
		b)	60-17,794N	018-33,392E	

Bsp Stockholm N 2018/s15, s60



Disused submarine power cable

Sjöfartsverket. Publ. 22 augusti 2019

Northern Baltic

* 14228 (T)

Chart: 61, 616, 6162, 6163, 62

Sweden. Northern Baltic. E of Utö. Firing exercises. September 2 - 8.

Firing exercises will be carried out within Utö firing range during stated times. The current extension of the closed area is given in the table.

Signal ammunition is used during hours of darkness.

Information during practice times VHF channel 16, call Utö skjutfält, or phone +46 8 501 570 45. Information about upcoming practice times, phone: +46 10 823 18 23, Muskö Sjöcentral.

Date	Time	Range from shore
September 2	0900 - 1800 LT	1.9 M
September 3	0900 - 1630 LT	1.9 M
September 4 - 8	0900 - 1800 LT	2.2 M

Position: Approx.	58-54N	018-20E	Utö Firing practice area
-------------------	--------	---------	--------------------------

Not shown in ENC.

Bsp Stockholm S 2018/s17, s18, s19, s37

Försvarsmakten. Publ. 21 augusti 2019

Lake Mälaren and Södertälje Canal

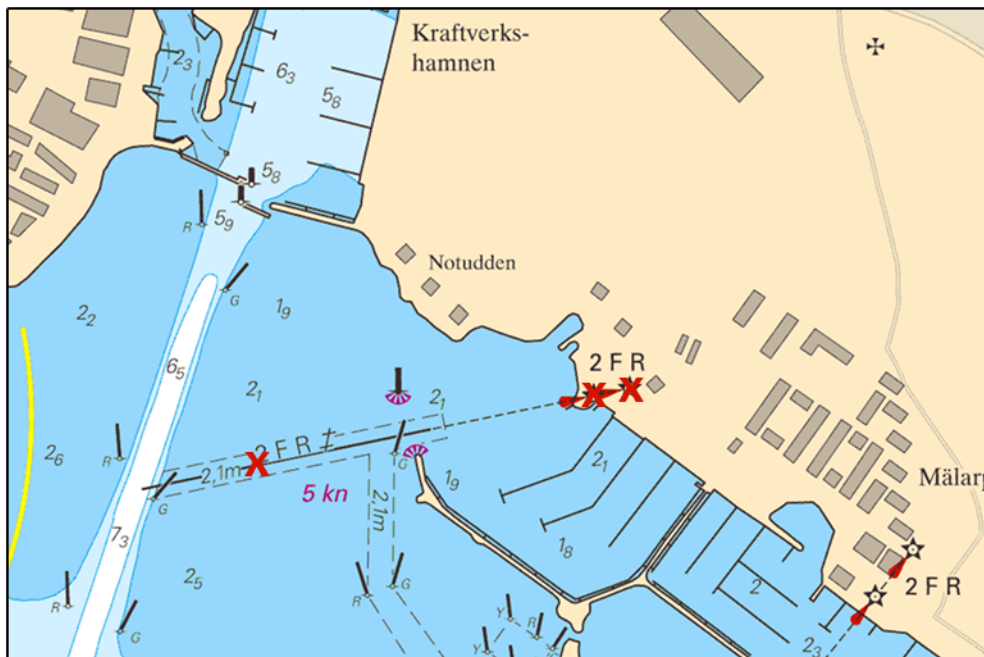
* 13570

Chart: 113

Sweden. Lake Mälaren and Södertälje Canal. Västerås. Mälarparken. Leading lights withdrawn.

Delete	leading light F R	a)	59-36,113N	016-34,462E
Delete	leading light F R	b)	59-36,108N	016-34,414E
Delete	leading line between b) and c)	c)	59-36,045N	016-33,815E

Bsp Mälaren - Hjälmarén 2016/s58



Västerås

Transportstyrelsen, Norrköping. Publ. 20 augusti 2019

* 14215 (T)

Chart: 6141

Sweden. Lake Mälaren and Södertälje Canal. Stockholm. Liljeholmsbron. Bridge will not open September 2 - 13, 2019.

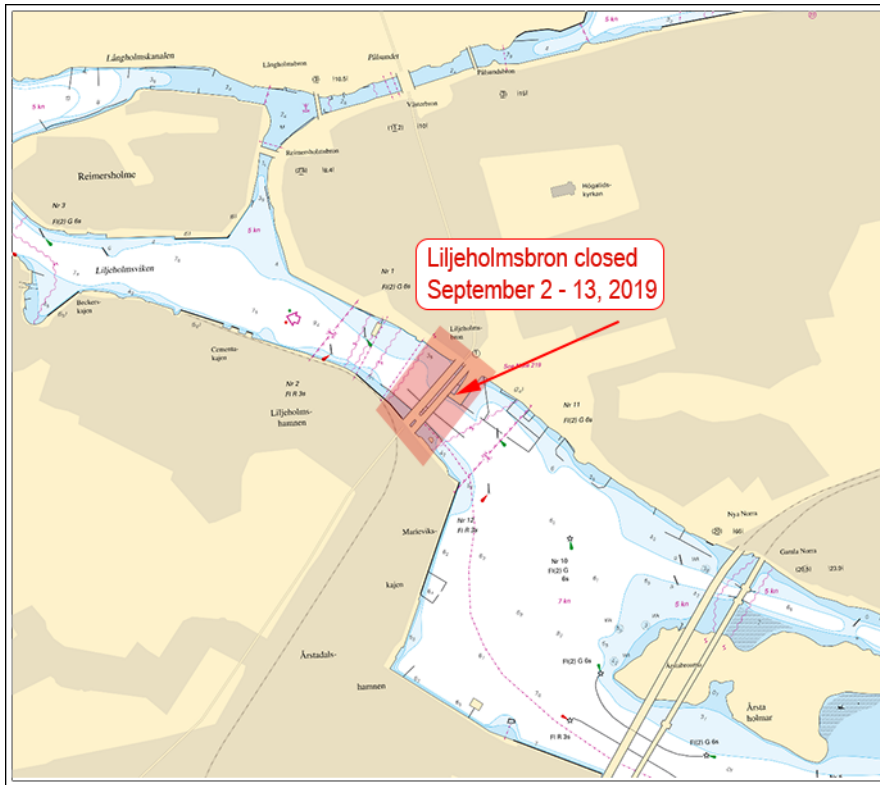
Time: September 2 - 13, 2019.

Bridge 'Liljeholmsbron' will not be opened during stated time.

Liljeholmsbron	59-18,80N	018-01,90E
----------------	-----------	------------

Not shown in ENC.

Bsp Mälaren - Hjälmaren 2016/s51



Lijeholmsbron

Sjöfartsverket. Publ. 22 augusti 2019

* 14252

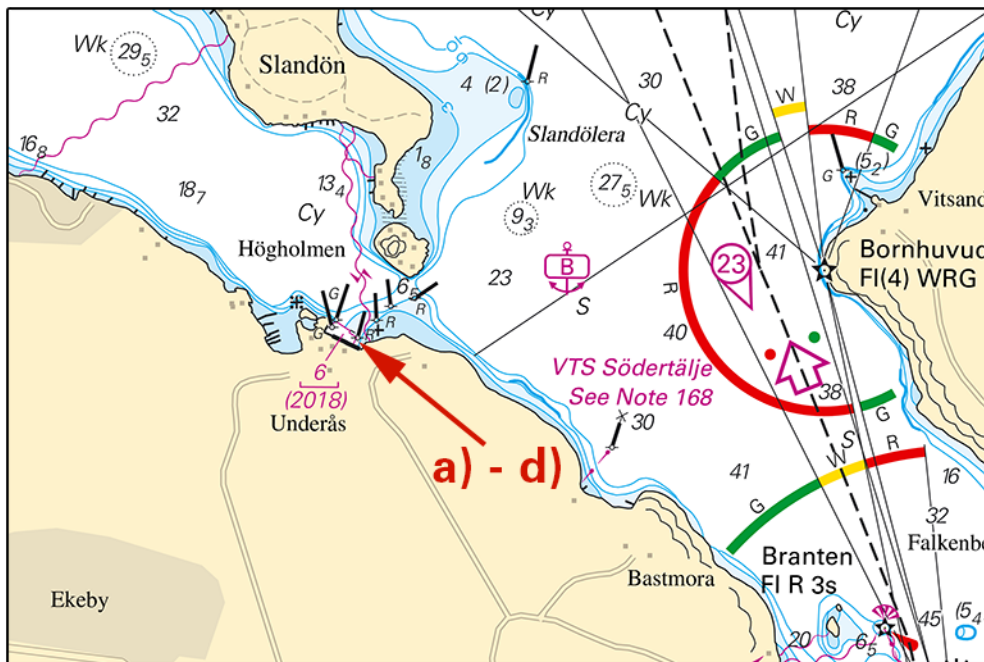
Chart: 111

Sweden. Lake Mälaren and Södertälje Canal. Björkfjärden. Underås. Amendments to depths.

A hydrographic survey near Underås has shown other depths than charted. Important amendments are presented in table below, and will be published in the next print of the affected chart. The changes are available as an ENC update.

Insert	bar swept area 6 m (2018) within a) - d)	a)	59-15,944N	017-32,339E
		b)	59-15,968N	017-32,39E
		c)	59-15,929N	017-32,487E
		d)	59-15,914N	017-32,473E

Bsp Mälaren - Hjälaren 2016/s28



Underås

Sjöfartsverket, Norrköping. Publ. 22 augusti 2019

Southern Baltic

* 14110 (T)

Chart: 74, 742, 743, 83

Sweden. Southern Baltic. Approach to Åhus. Rinkaby. Firing exercises. Augusti.

Position: Approx.	55-56N	014-22E	Firing restriction area R38A RINKABY
-------------------	--------	---------	--------------------------------------

The restriction area R38A will be closed for vessels during times given in the table. The exercises will be interrupted to allow passage of merchant vessels.

During exercise orange quick light, Q Or, is shown from shore.
For further information call +46 44 24 25 02 (only during firings).

Date	Hours	Range
August 31	0900 - 1600 LT	2.7 M

Not shown in ENC.

Bsp Hanöbukten 2018/s24, s25, s26

Försvarsmakten, Södra Skånska Regementet, Södra Sandby. Publ. 22 augusti 2019

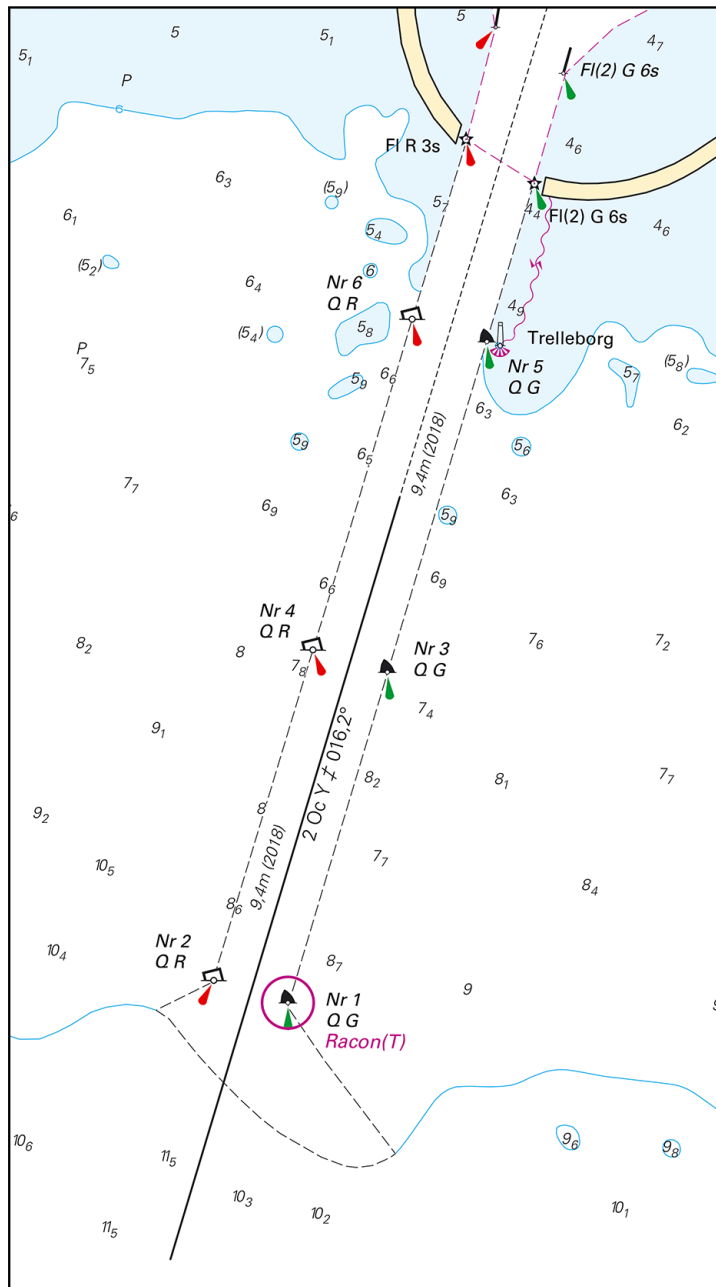
* 14242

Chart: 839, 921

Sweden. Southern Baltic. Approach to Port of Trelleborg. Depths.

Delete	swept area 9.4 m	a)	55-21,209N	013-08,717E
Amend	draft 6.6 m to 5.9 m	b)	55-21,235N	013-08,860E
Delete	depth 9.7 m	c)	55-20,661N	013-08,439E
Delete	depth 9.5 m	d)	55-20,641N	013-08,619E
Delete	depth 9.8 m	e)	55-20,689N	013-08,539E
Insert	dredged area 9.4 m as shown	f)	55-21,209N	013-08,717E

Bsp Sydkusten 2012/s25, s26, s53



Approach to Port of Trelleborg

Sjöfartsverket. Publ. 21 augusti 2019

* 14249 (T)

Chart: 71, 74, 741, 7411, 83

Sweden. Southern Baltic. Karlskrona. W of Utklippan. Blast warning. August 27 2019.

Time: Augusti 27 2019, 0800 - 1900 LT. Reserve day August 28.

Swedish armed forces conducting underwater blastings. Safe distance 1852 m.

Contact: VHF CH 16 or telephone: +46 10 823 1823.

Excercise area R63E	a)	56-00,00N	015-33,00E
	b)	56-00,00N	015-37,00E
	c)	55-57,58N	015-37,00E
	d)	55-57,58N	015-33,00E

Not shown in ENC

Bsp Hanöbukten 2018/s05, s06, s39

Försvarsmakten. Publ. 22 augusti 2019

* 14256 (T)

Chart: 741, 7413

Sweden. Southern Baltic. SW of Ronneby. Ekösund. Diving operations.

Time: August 20 - September 6, 2019

Archeological diving operation.

Mariners are requested to pass with caution and keep safe distance from diving vessels and platforms.

Archeological diving operations	56-08,69N	015-13,26E
---------------------------------	-----------	------------

Not shown in ENC.

Bsp Hanöbukten 2018/s03, s06, s18, s44, s45

MMT Sweden AB. Publ. 22 augusti 2019

The Sound

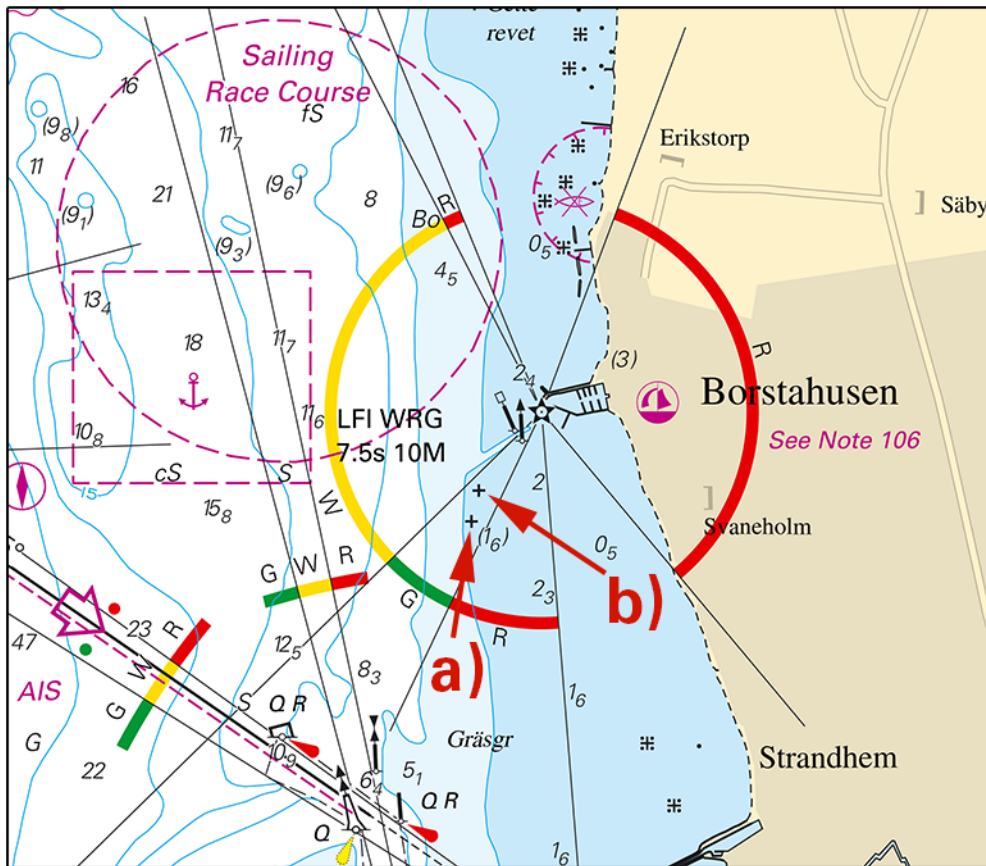
* 14195

Chart: 922

Sweden. The Sound. Landskrona. Borstahusen. Underwater rocks.

Insert	underwater rock (1,6)	a)	55-53,408N	012-47,678E
Insert	underwater rock	b)	55-53,481N	012-47,709E

Bsp Sydkusten 2012/s13, s31



Sjöfartsverket, Norrköping. Publ. 20 augusti 2019

Kattegat

* 14251 (T)

Chart: 92, 923, 924

Sweden. Kattegat. W of Halmstad. Ringenäs. Firing exercise. Augusti 28.

Position: Approx.	56-40,8N	012-38,6E	Firing restriction area R41 A RINGENÄS
-------------------	----------	-----------	----------------------------------------

Firing will take place at R41A Ringenäs firing range during stated times. The dangerous area extends from the shore according to table below. A light on shore, VQ R, will be shown during firing.

For further information call +46 35 266 39 55, +46 35 536 77.

Date	Time	Range
August 28	0900 - 1500 LT	3.8 M

Not shown in ENC.

Bsp Västkusten S 2019/s29, s30

Försvarsmakten, Lv6. Publ. 22 augusti 2019